



formatting software

Vers 1.0

Instruction Manual

Overview

The FlipNLearn™ Formating Software is used to place your photos and text into the correct postions to print on the FlipNLearn Format Paper.*

Each FlipNLearn Format is created using your images and text and saved as a project. The FlipNLearn Formating Software takes you through the creation of a project – step-by-step. A finished project is printed on the appropriate FlipNLearn Format Paper and saved to be used again. Saved projects can be opened for repeated use, or they can be changed and saved with a different name. This is the suggested method to use if you have several projects with similar images or text. You can selectively replace any photo or text.

The process to create a project is basically the same for all of the FlipNLearn forms.

1. Select the theme / template that fits your project
2. Add your photo and text
3. Print as many copies as you want
4. Save the project for later use

Installing FlipNLearn

The FlipNLearn Paper Format requires images and text to be placed in specific positions and orientations. The FlipNLearn Formatting Software does this automatically.

There are four templates that you may choose depending on how many images you want to use in your project. The software will take you through the creation of a project step-by-step. All the templates work in a similar fashion so once you have done one, the others will all follow the same process.

System requirements

FlipNLearn software is compatible with Windows operating systems 98, ME, 2000 & XP.

Install the application

Download the software from the Internet:

Go to: www.FlipNLearn.com/pages/support

Select the FlipNLearn Software link

Select to "Run"

Follow the setup wizard.

To install from CD

Insert the FlipNLearn CD into the CD drive of your computer. The installation should begin automatically. If it does not, browse to the CD drive and run *setup.exe* by double clicking on it. Follow the instructions and install the application.

QuickTime and Adobe Reader

Once the FlipNLearn software has been installed you will be asked to install QuickTime. You can skip this step if you have already installed Quick Time version 5.0 or higher on your computer.

NOTE: The QuickTime install may ask you for registration information. You can leave this section blank and continue to accept the default prompts for QuickTime installation.

You will also need Adobe Acrobat or Reader 6.0 or greater. Adobe Reader can be downloaded from www.Adobe.com at no cost.

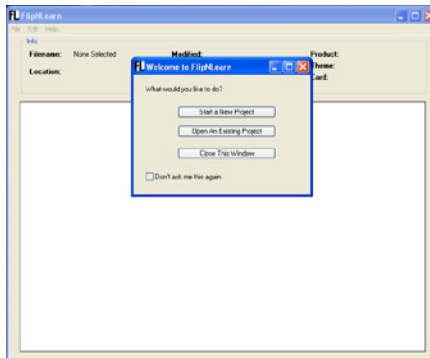
Using FlipNLearn

Run the FlipNLearn application

From the Start menu select Programs then FlipNLearn. The FlipNLearn application will begin.

Start a new project

Each file you create is referred to as a Project. When the FlipNLearn Welcome Dialog box appears click the **Start a New Project** button.

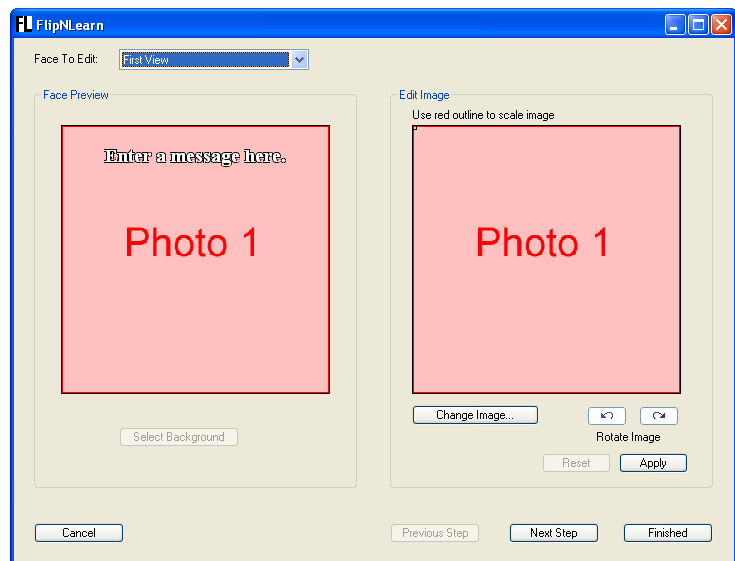


This will display a menu with product selection, which at this time is FlipPix. Use your mouse or arrow keys to highlight FlipPix and click **Next**.



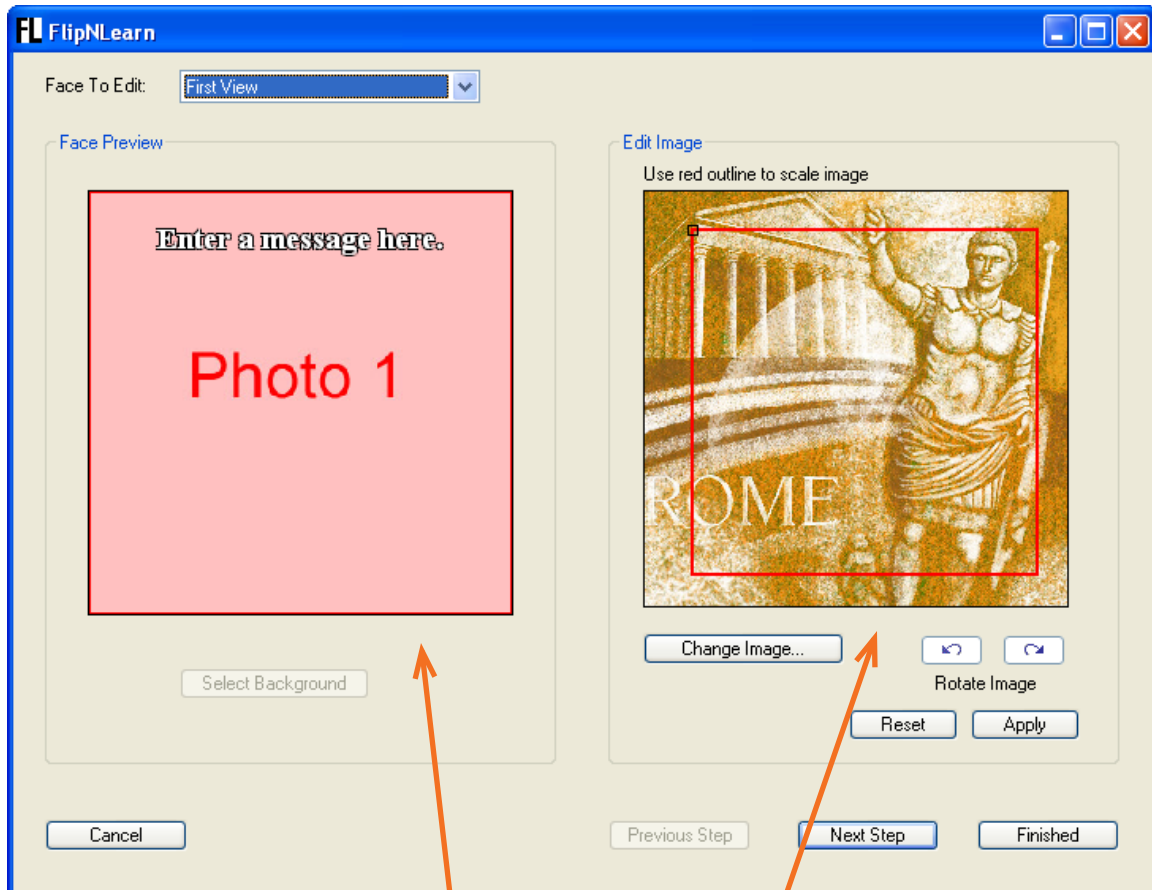
Your next choice is to select a template. A selection of four templates will be displayed, each being a variation for the FlipPix format. The primary difference between templates are the number and placement of photos and text boxes for the FlipPix. Use your mouse or arrow keys to highlight the template you want and click "Next"

The software will then display the first face for the product you have chosen. On the left is a preview for that face and on the right is the edit window. The software will take you through the entire form face-by-face until you have completed the project.



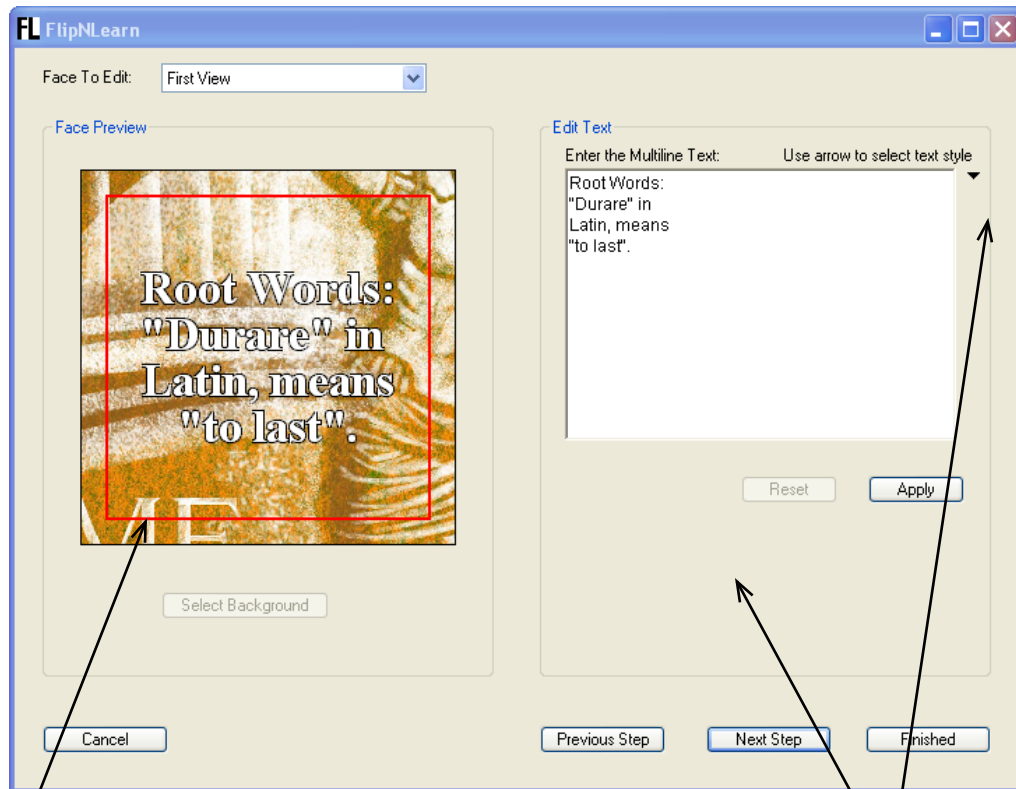
Using the Face Editor window

The Face Editor window allows you to edit the content of all of the user selectable items on each face of a FlipNLearn Format. The following pictures highlight the major functions of the Face Editor window.



The face preview is shown on the left side of the edit window and will display the image you have selected and scaled in the edit window AFTER you click "Apply"

Stretch and position the crop tool to select the portion of the image that will be placed on this face



Red border shows the area for text.

You may change the text attributes (font, size, color, position, etc) either by opening the drop down menu or by right-click in the text edit window.

Entering and placing text

Each text box shows the text area bounded in red in the left preview pane and an entry/edit window on the right. When you begin a project, there is “placeholder” text already in place. Just replace the placeholder text with your text. Type the text into the edit window and then right-click in the edit window to access the drop down text attributes list. Click on any of the attributes to make a change. You can change any or all of the attributes. Then click “Apply” to see the results in the preview pane. If you want to make additional changes, just right click in the edit window, make your changes and click apply again.

If you don’t want text in any particular text box, just delete the placeholder text.

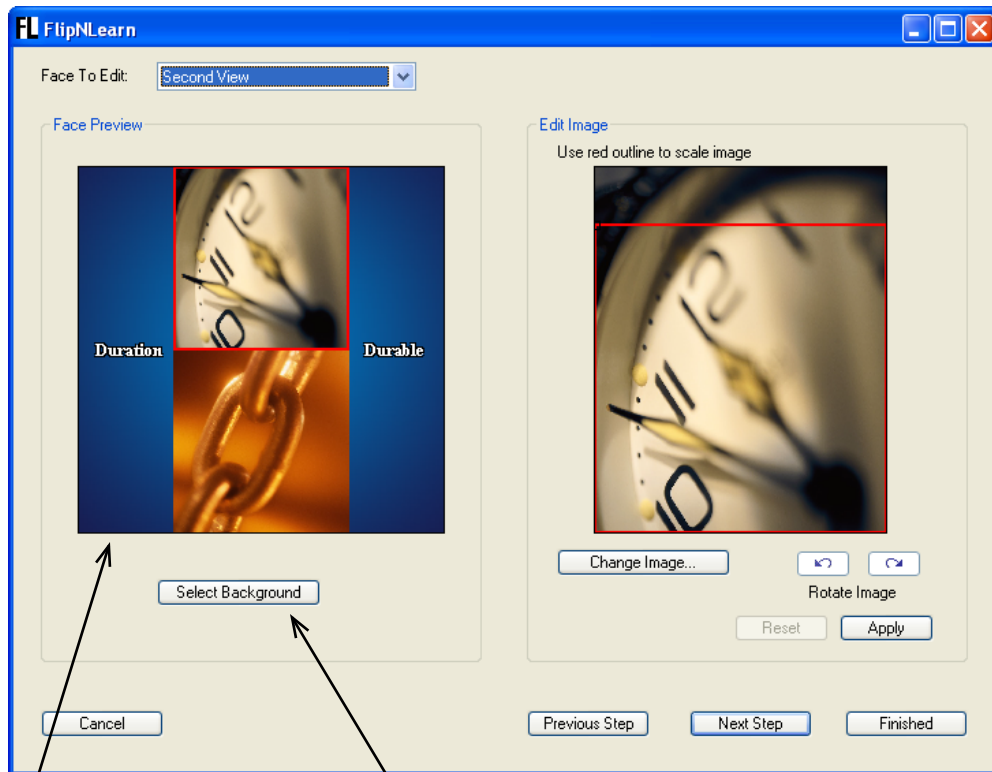


Fig. 3

Background on some views

To change the background, click here, then choose a new background.

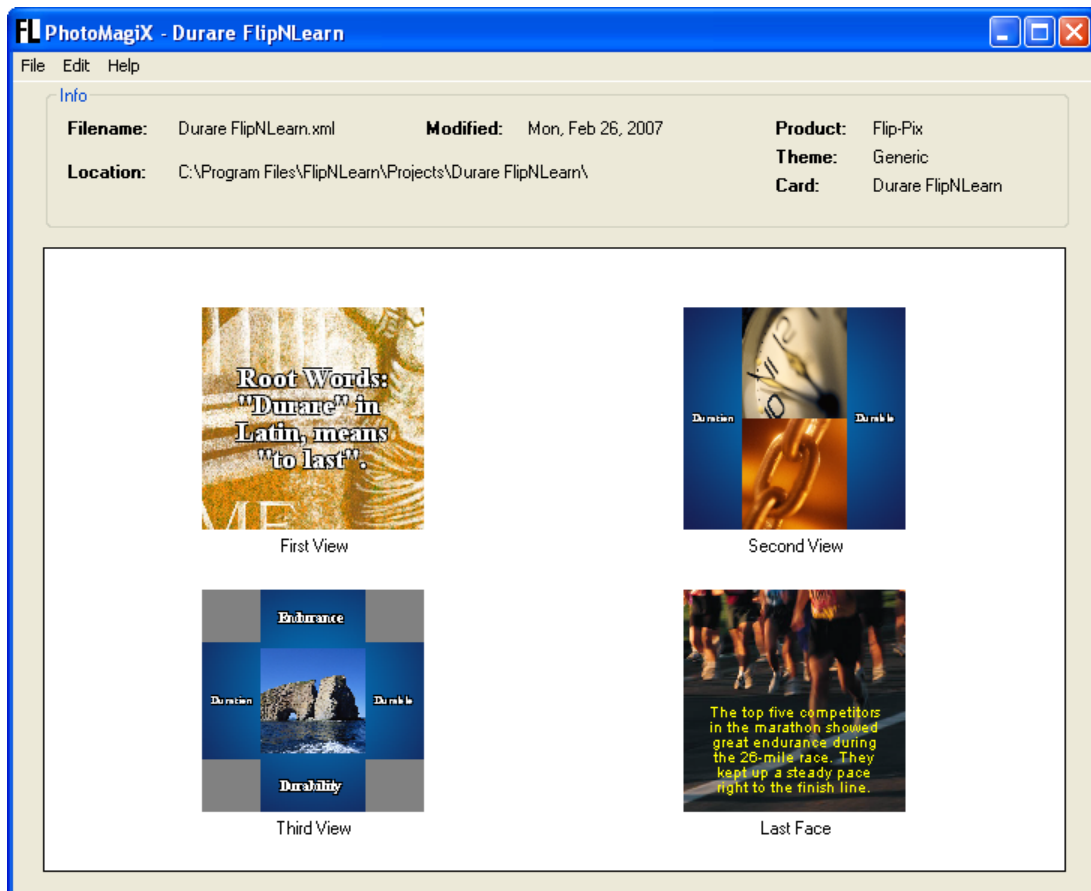
Changing the background

Backgrounds may be changed by clicking the "Change Background" button. Then choose from the list of backgrounds that are displayed. You will have the option of changing the background for this view only, or for all views. For color swatches and designs of the backgrounds, see Page 9

Finishing your Project

After you have completed all the steps placing your images and text, just click the **Finished** button. You will see thumbnail images of all the faces of your project. At this point you can click on any face to go back and make changes. When you are satisfied with your project, place the appropriate FlipNLearn Paper in your printer and click File, Print to print your project. See printing tips on page 18.

You can save the project to be used again or to be opened and changed to create another project.



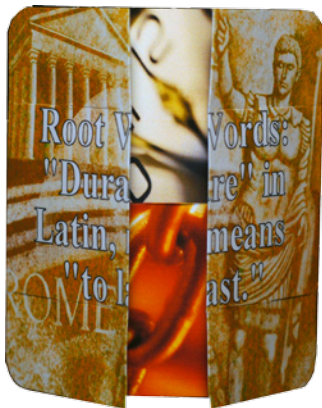
FlipNLearn® Templates

The FlipNLearn is an interactive photo show. Once completed and assembled the FlipNLearn folds to reveal four different views and repeats endlessly. Few people can put it down once they start folding it back.

We suggest a bit of preplanning before you start creating your FlipNLearn. The FlipNLearn shows four successive views. We refer to these as View 1, View 2, View 3, and View 4. Each view is comprised of segments, each segment being defined by the fold-scores on the FlipNLearn.

You can place images and text in specific segments. The templates illustrated on the following page shows the segments and where images and text will be placed.

One characteristic that you want to consider is the text that appears in the left and right segments on View 2 will also be visible in View 3. Once you have made one FlipNLearn, you will see clearly how each view works.



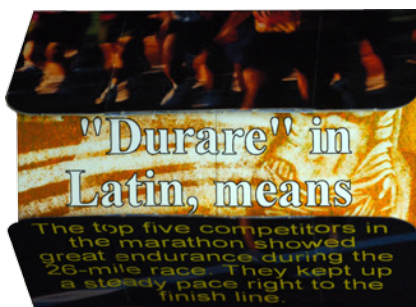
View 1



View 2



View 3

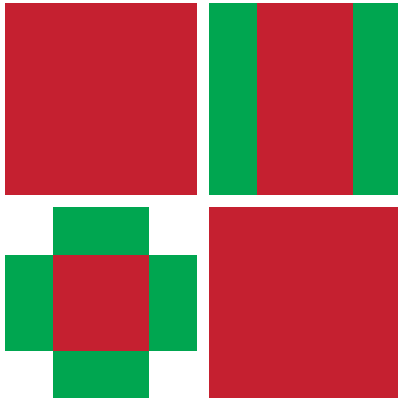


View 4

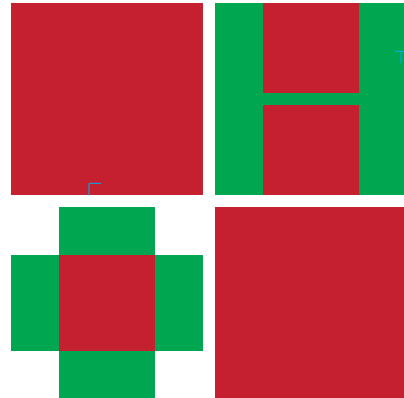
Illustration showing how FlipNLearn "Flips" from one image to the next. This example was created using Template 5-1

FlipNLearn Templates

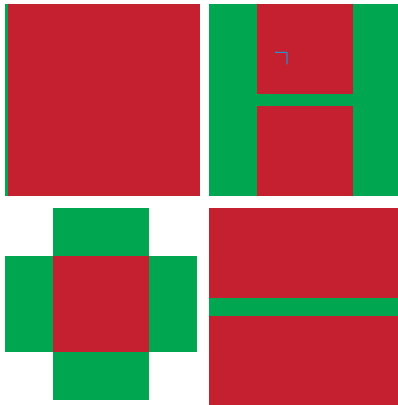
FlipNLearn V-4-1



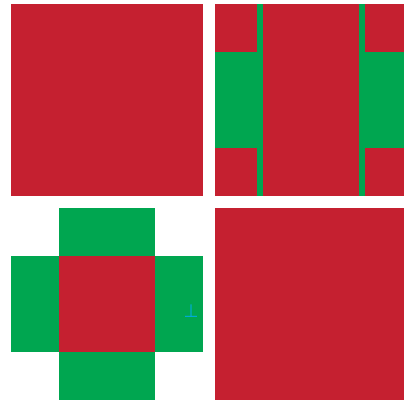
FlipNLearn V-5-1




FlipNLearn V-6-1





FlipNLearn V-8-1



Legend

 Background (Note, the background can be changed - see Page 17 for background choices and instructions to make your own backgrounds)

 Imported photos/images

 Text. (Refer to Page 18 for instructions on changing text attributes and control of text placement)

Backgrounds



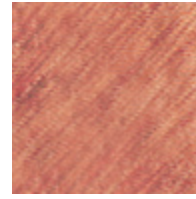
Bamboo



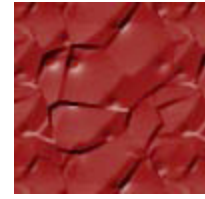
Red Sand



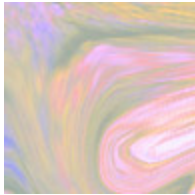
Bright Red



Brown



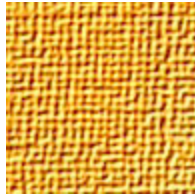
Deep Red



Swirl



Tan



Light Orange



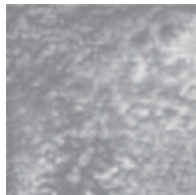
Tan Sand



Yellow Pattern



Pale Violet



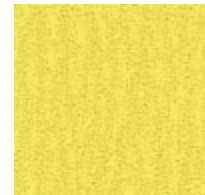
Gray



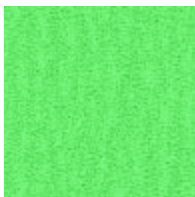
Gray Sand



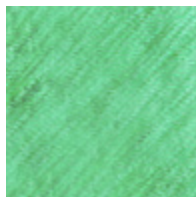
Pale Yellow



Yellow Sand



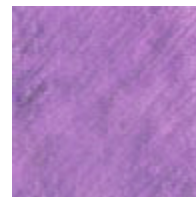
Green Sand



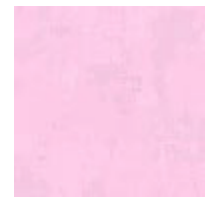
Green



Pale Green



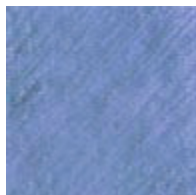
Violet



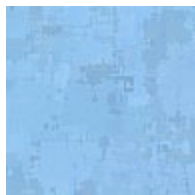
Pale Pink



Med Blue Grain



Blue Gray



Light Blue



Pale Blue



Purple



White Background

If you do not want any background, just select “White Background”.

You may make your own backgrounds. The background images are 3.0” x 3.0” jpg files at 96 dpi. You may create backgrounds in Photoshop or other image editing program or shoot some interesting patterns with a digital camera. Background image files are in the folder: ...\\Program Files\\FlipNLearn\\ProductData\\Backgrounds*.jpg

Text Tips

When you enter text in a text box, the text will have the default attributes. You can change the text attributes by right-clicking in the text edit window. This will open the attributes drop-down and you can change any or all of the attributes listed.

Font - This will open a list of the fonts installed on your system. You may choose any of the fonts shown.

Size - Changes the size of the selected font

Color - Opens a list of available colors for the text

Horizontal Alignment - Left, Center, Right

Vertical Alignment - Top, Center, Bottom

Bold - Toggles Off / On

Italic - Toggles Off / On

DropShadow - Toggles Off / On

Outline - Toggles Off / On

Each text box is treated as a unit and any changes that you apply to the text attributes will apply to the entire text box. Some templates have two text boxes on top of the photo. This will allow you to have two different sets of text attributes. For example, one text box could have a larger font. Each text box could be a different color, etc.

You can move the text within the text box by changing the horizontal or vertical alignment attributes. You may also include extra line spaces either at the beginning or in the middle of your text to place the text where you want.

Printing Tips

The FlipNLearn page size is 8.5" x 11".

Check your printer calibration

[This is an optional step and is only required if your printer does not print the images in exactly the correct location on the FlipNLearn paper.]

Some printers require a fine adjustment to locate the printed data precisely on the paper. Because of the pre-cut forms on your PhtoMagiX Paper it is important that the calibration be as accurate as possible. The FlipNLearn Software can compensate for small irregularities in your printer's calibration using the Printer Calibration Wizard. To check your printer's calibration and correct it if necessary choose *File-Printer Calibration* from the FlipNLearn main menu. Load plain paper in your printer and follow the instructions in the step-by-step wizard. In most instances a printer will only need to be calibrated once.

Saving Your Project

The saved projects can be opened and printed again or they can be modified and saved as a different project if you save as a different file name. An image is displayed on the file menu to help you recognize the project.

Support & Downloads

Support

If you are having a problem the answer may already be available to you on our website. Just log onto www.FlipNLearn.com and select Support. Then browse through the Frequently Asked Questions. If you don't find your answer, then just drop us an email at the address on the support page. Our current support email address is: Support@FlipNLearn.com